



Spartners
by Servier & BioLabs

Accelerating your
time-to-market



spartners
by Servier & BiOLabs



SERVIER & BIOLABS IN SACLAY

About the partnership Servier & BioLabs in Saclay

Embedded in the new Servier's R&D center, BioLabs is operating a 2,000sqm as our first premium life science coworking facility in Paris-Saclay. Spartners by Servier & BioLabs will be the newest addition to the European BioLabs network. Targeted at high-potential, early-stage scientific ventures, the site offers shared open lab spaces with over 110 lab benches, premium private offices, and workstations. Flexible, fully equipped, and supported by a staff of scientists, the site offers shared equipment and access to many academic institutes in Saclay. Besides, Servier is offering its expertise and opening its experimental platforms and vivarium to our residents.

ACCES TO PREMIUM LAB AND OFFICE SPACE

Centralized group purchasing system—Servier Marketplace is a pharma-grade procurement system that simplifies your accounting, offers dramatic discounts from top life science vendors, and includes shipping and receiving services.

Ready-to-go labs—Get pipettes in hands on your first day. BioLabs provides everything you need to move swiftly. We take care of permits, temperature-tracking for cold storage, lab coats, LN2 and CO2... all the little pieces you need to start immediately.

Scientific and industrial expertise provided by Servier teams and access to experimental platforms.

A full suite of state-of-the-art shared equipment—Unmetered access to cutting-edge qPCR, HPLC, flow cytometry, microscopy, tissue culture suites, cold storage, and much more – all maintained and managed by a team of BioLabs scientists.

On-site concierge services including scientific support and events staff.

Full Environmental Health & Safety support and hazardous waste disposal including chemical and biohazard waste disposal, safety training for your team, and incident response planning.

Access to leading community and industry partners including top pharma companies and life science groups.

Programming and networking—Educational and social events hosted by a wide network of sponsors and business leaders from the biotech and pharma industries.

Access to core facilities and services through our partnerships with many local academic institutes.

Flexible membership terms—Rent one bench at a time, one month at a time. Grow organically, without a long-term commitment!





EQUIPEMENTS ON SITE

Laboratoires de culture cellulaire (L2)

- PSM,
- Incubateurs CO₂
- Compteurs de cellules,
- Centrifugeuses ...

Equipements "Cell Biology"

- Cytomètre en flux, Spectrophotomètre,
- Fluoromètre, Luminomètre, laveur de plaques...

Equipements "Molecular biology"

- Systèmes d'électrophorèse, d'électrophorèse capillaire automatisée
- Cuve à gel et module de transfert, système d'imagerie (gels, transferts Western)
- Station de travail robotisée pour la purification d'acides nucléiques
- Spectrophotomètre (microvolumes)

Equipements "Chemistry"

- Sorbonnes
- FPLC et HPLC
- pH mètre, balances, sonicateur, rotovap, lyophilisateur

PCR :

- PCR classique,
- PCR Quantitative,
- PCR Digitale

Microscopie:

- Microscope confocal,
- Microscope à fluorescence (avec incubateur)

Espace stockages froid, cryoconservation:

- Chambres froides et réfrigérateurs (4°C)
Congélateurs -20°C et -80°C
- Cuve azote liquide (stockage banques cellulaires)
- Monitoring de l'ensembles des enceintes

Divers:

- Ultracentrifugeuse, centrifugeuse à plaque...
- Vortex, agitateur microplaques, agitateur à bascule, bains à sec...
- Système d'eau ultra pure
- Autoclave, verrerie, service laverie
- Mise à disposition des EPI (blouses, lunettes, gants..)
- Gestion des déchets



Monthly Membership

250 € Per Person

Access to conference rooms, event space and non-laboratory amenities.

PLUS

Laboratory Bench

1,700 € Per Month

Access to fully equipped coworking laboratory. Start with a single bench and scale up as you grow.

OR

Private Lab

Starting from 11,900 € Per Month

OR

Office Workstation

200 € Per Workstation Per Month

Access to fully equipped co-working office workstations and non-laboratory amenities.

OR

Private Office

Starting from 1,300 € Per Month





KAWASAKI, JP



 **biolabs**

An International Network

BIOLABS

BioLabs designs and operates premium lab and office spaces around the world. Through strategic partnerships with prominent real estate developers and premiere innovation partners, BioLabs has grown a network in Class-A laboratory buildings across established and emerging biotech clusters.

Flexible terms, world-class amenities, and white glove services allow life science innovators to work, collaborate, and host events. By admitting only the most promising companies, BioLabs members are surrounded by a community of peers.

- * **OUR MISSION:** Saving your time and money by accelerating your time-to-market
- * **OUR AMBITION** Offering the best experience in an industrial context
- * **OUR MEANS:** Offering services and expertise that will help you focus on science

Established 2009



HEIDELBERG, DE
BioLabs Heidelberg

PARIS, FR
BioLabs Hotel Dieu

PARIS-SACLAY, FR
Spartans by Sorcier & BioLabs

SERVIER

**An independant, global pharmaceutical group
governed by a non-profit foundation**

- * **21,900 employees** - Present in 75 countries
- * **Focus on oncology** - Over 70% of Group's R&D investments
- * **Continued investment in R&D** - Over 20% of brand-name revenue invested in R&D each year
- * **4 therapeutic areas**
 - Oncology
 - Immuno-inflammation
 - Neuroscience
- * **A pipeline in line with strategic objectives**
 - 41 projects in clinical development
 - 29 research projects
 - As of May 2024
- * **An open innovation policy**
 - Over 70 scientific partnerships and collaboartions in 2022/2023

34TH largest pharmaceutical
Group worldwide

2ND largest pharmaceutical
French Group

HARNESSING SERVIER' PIONNERING SPIRIT TO DRIVE INNOVATION

With the Servier Research and Development Institute in Paris-Saclay, the Group has taken a new step in its journey to more open, dynamic, and productive research in order to more effectively meet patients' unmet therapeutic needs. Since 2023, up to 1,500 employees have been working together onsite to reinvent health care tomorrow.

A wide-angle architectural rendering of a modern, multi-story research building. The building features a mix of materials, including dark wood paneling and large glass windows. A central section of the building is curved and has a metallic, vertical-slatted facade. The building is surrounded by green trees and a clear blue sky. The text "Accelerating research today to reinvent the Health of tomorrow" is overlaid in the center of the image.

*Accelerating research today
to reinvent the Health of tomorrow*

BIOTECH ECOSYSTEM IN PARIS-SACLAY

A dynamic life science community in France

Paris-Saclay offers access to a robust scientific environment and a rich core of academic institutions:

Université Paris-Saclay

INSERM

CNRS

CEA

Institut Curie

Institut Polytechnique de Paris

Ecole Normale Supérieure Paris-Saclay

Genopole

Public funding and VC funding, which are both integral to continued growth increased 100% and 50%, respectively, between 2020 and 2021. Additionally, the French Life Sciences startups will create over 2000 jobs in 2022*

2,3 billion euros raised by French Healthtech startups in 2021*

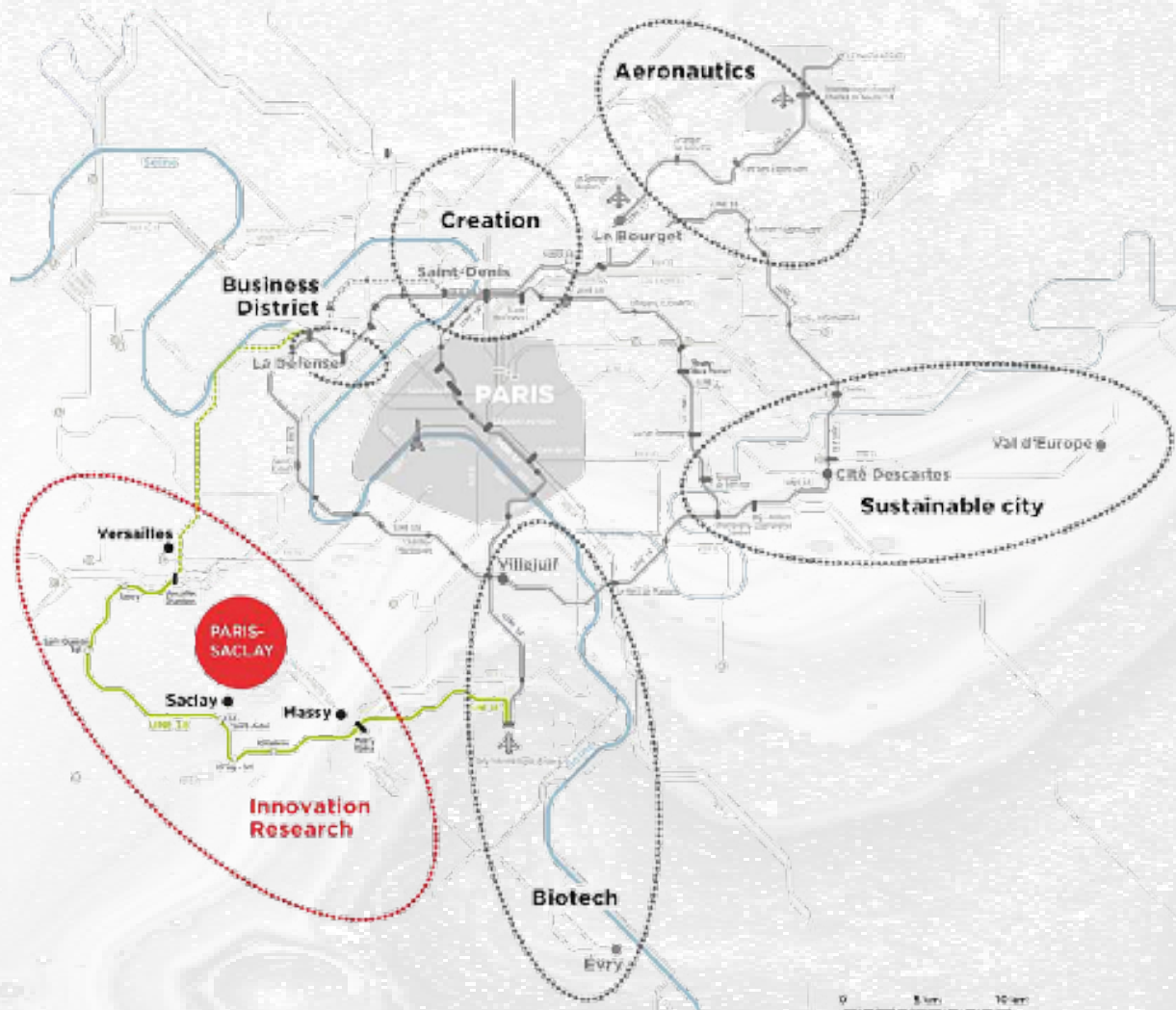
1,2 billion euros of public fund support for French Healthtech companies in 2021*

** France Biotech 2021 Healthtech Panorama*

OURS PARTNERS IN PARIS-SACLAY

Servier and BioLabs support a robust ecosystem by leveraging relationships with our partners. These partners include trade organizations, investors, academic partners and business accelerators. We connect ecosystem partners with our companies in a meaningful way through engaging programming. BioLabs cultivates those connections into long lasting relationships for our members.

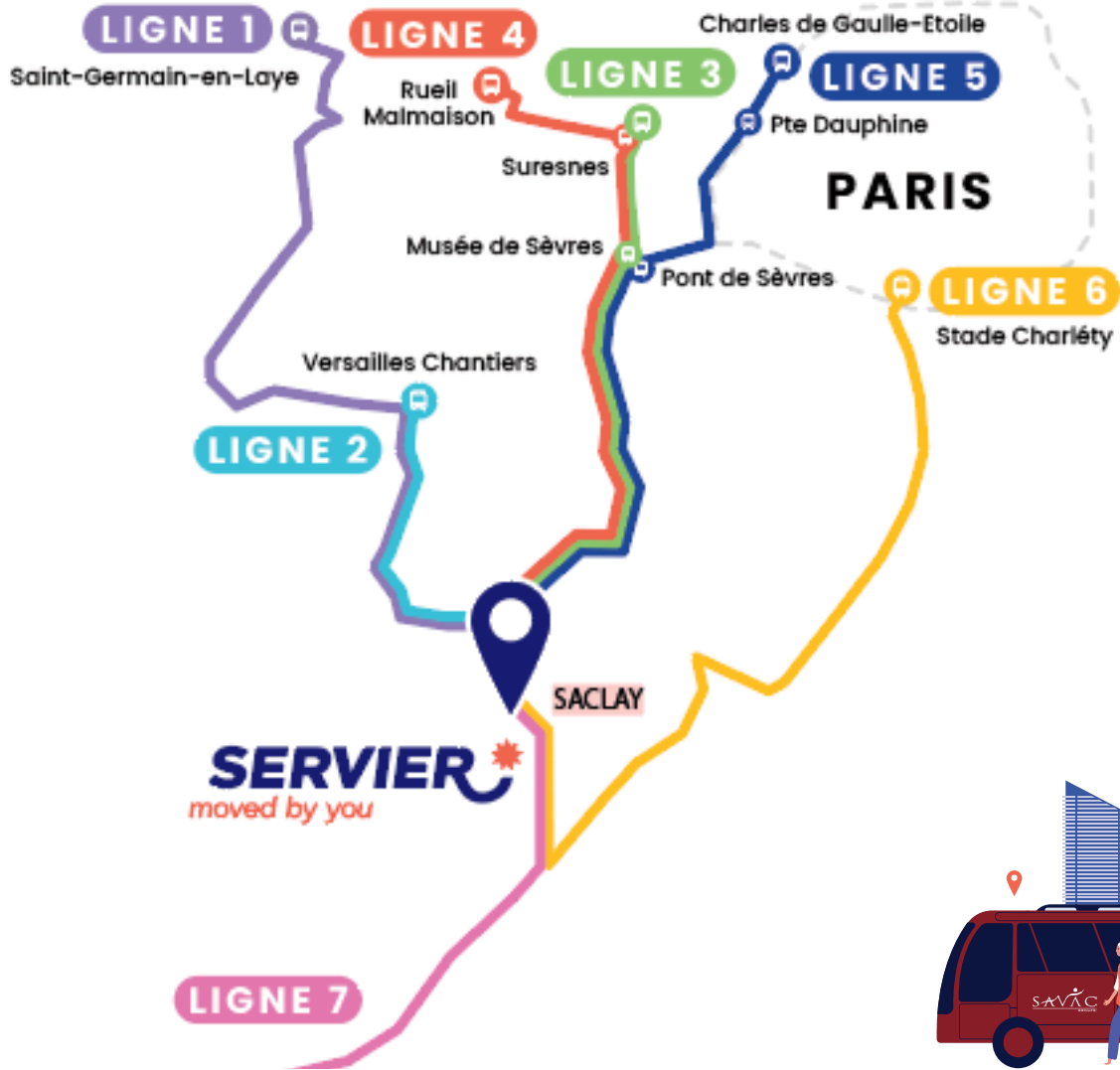




ACCESS : BENEFICIATE FROM SERVIER'S SHUTTLE FOR FREE

Adresses des lignes

- 1 **Départ** 2 rue des Thiers, 78100 Saint-Germain-en-Laye
- 2 **Départ** Cour de Buc - 2, rue de la Porte de Buc (*Direction Buc*), 78000 Versailles
- 6 **Départ** Stade Charléty – Porte de Gentilly – 19 avenue Pierre de Coubertin, 75013 Paris.
- 3 **Départ** 50 rue Carnot, 92150 Suresnes
 - **Arrêt n°1** : Place de la Manufacture Nationale, 92310 Sèvres
- 4 **Départ** en face du 16-18 rue Pereire, Rueil-Malmaison.
 - **Arrêt n°1** Gare du Mont-Valérien – Hôpital Foch – 21 avenue Franklin Roosevelt (*sous le pont direction Suresnes*), 92150 Suresnes
- 5 **Départ** 2 avenue Carnot, 75017 Paris
 - **Arrêt n°1** : 1 Boulevard Lannes, 75116 Paris (*Dauphine*)
 - **Arrêt n°2** : Avenue du Général Leclerc, Sèvres. Il s'agit de l'arrêt « Pont de Sèvres » de la 39-34, matérialisé par un abris-bus. *Attention car il y a 3 arrêts de bus Pont de Sèvres sur la même Avenue. Il s'agit de celui qui est le plus proche du pont.*
- 7 **Départ** Arrêt zébré en face du 11 rue Emile Zola, 45000 Orléans.
 - **Arrêt n°1** : 116 rue Henri Becquerel, 45770 Saran (*sur la rue parallèle au parking Vinci de Co-voiturage*).



SPONSORSHIP OPPORTUNITIES

BioLabs offers great sponsorship and partnership opportunities.

This allows our sponsors and partners to support and engage with innovative local life science startups that are developing groundbreaking technologies. It also enables opportunities to build long term relationships and establish partnerships between sponsors and BioLabs' resident companies.

BioLabs works with sponsors from different sectors of the life sciences community, including:

Pharmaceutical companies

Biotech companies

Analytical instrumentation companies

Legal firms, CROs

Academic Institutions and more

This diversity supports BioLabs' overall mission of providing the best services and network to our resident companies and enables them to focus on their meaningful science.



CURRENT SPONSORS

FOUNDING



PLATINUM



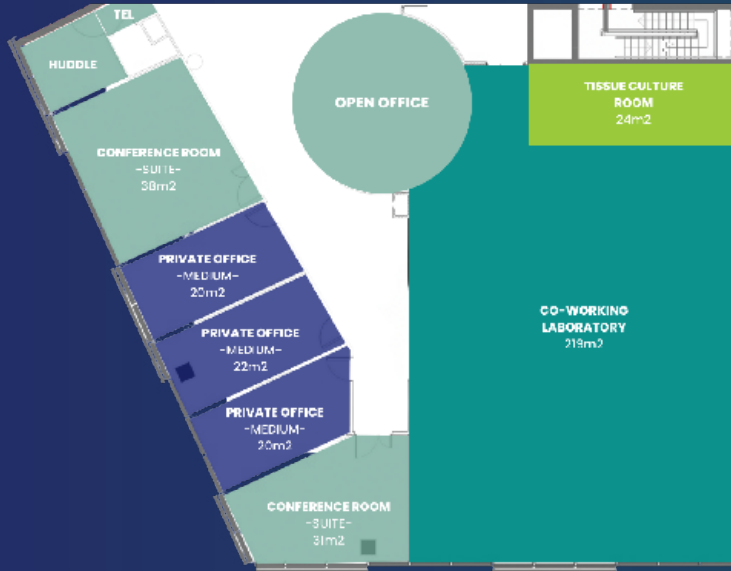
GOLD



GENERAL



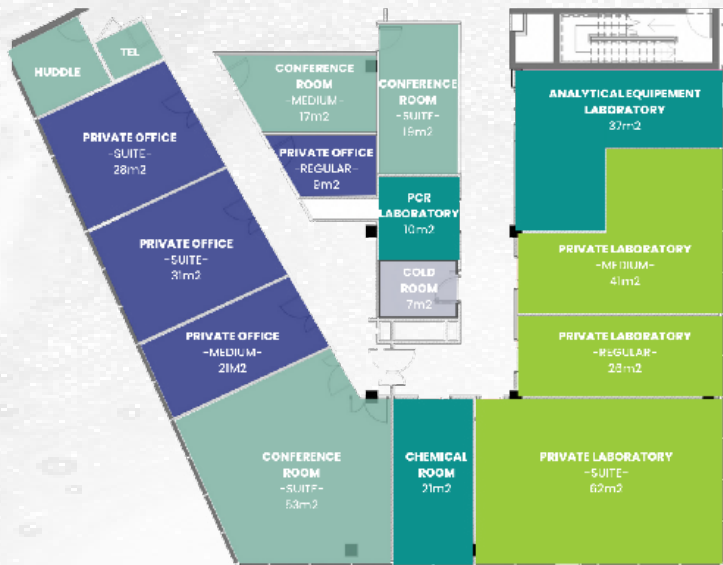
SPARTNERS FLOOR PLAN



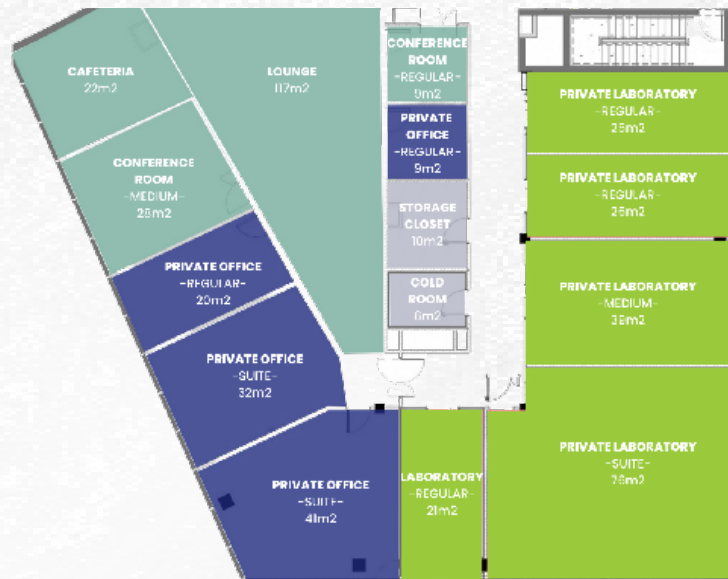
GROUND FLOOR



1ST FLOOR



2ND FLOOR



3RD FLOOR

Sharing laboratory space

Sharing space

Private office

BSL - 2

BSL - 1

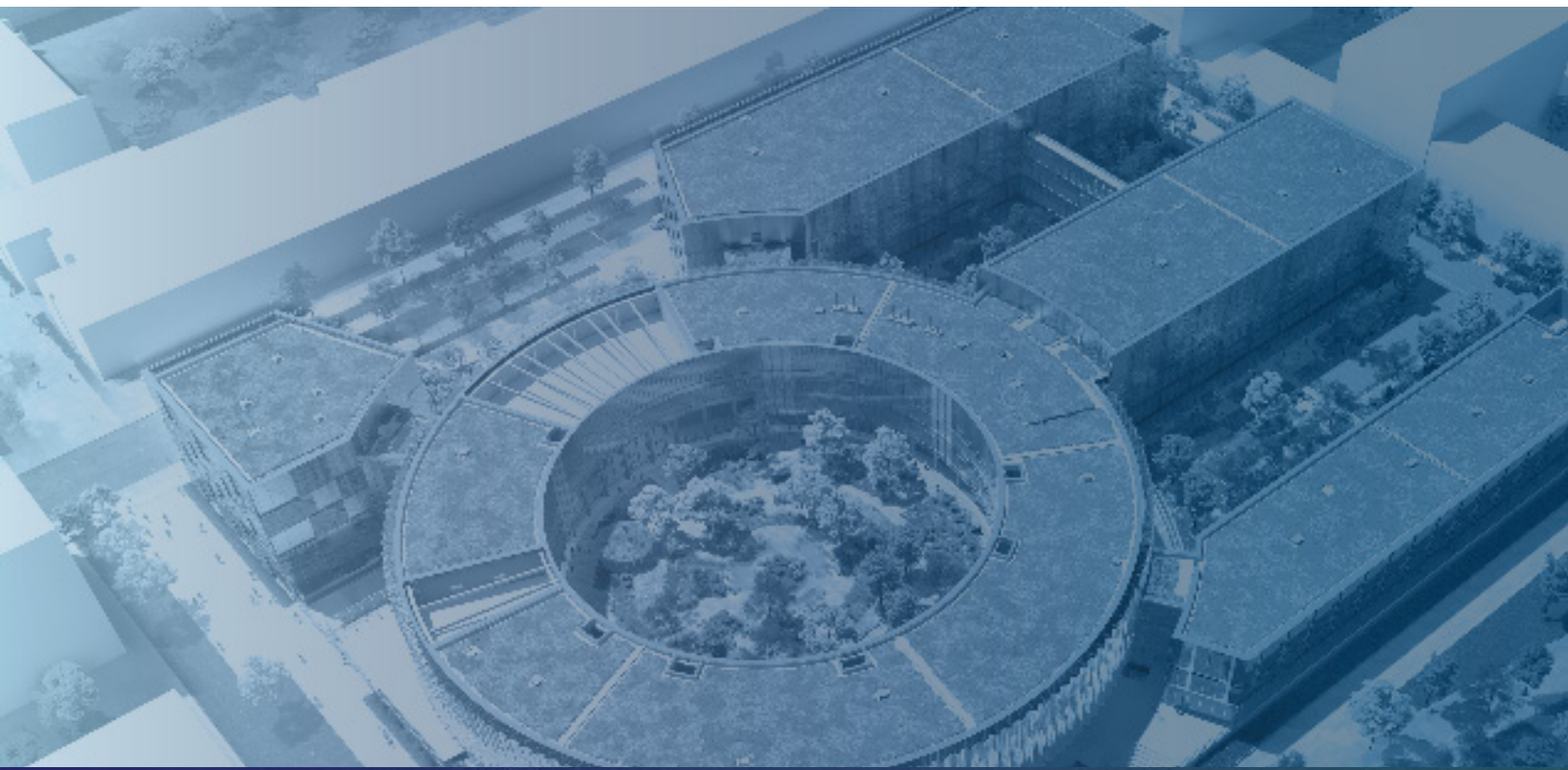
The background of the image features a dark blue field with large, overlapping, curved shapes in a teal or greenish-blue color, creating a dynamic, abstract pattern.

Spartne

by Servier & Bio

The logo for BioLabs features a large, light green circle on the left side of a dark teal background. The text "BioLabs" is written in white, with "Bio" in a smaller font size than "Labs".

ers
BioLabs



If you are interested in becoming a resident of Spartners or for sponsorship, please contact :

Hélène SIRE
Site director
helene@biolabs.io

SPARTNERS
22 Route 128
91190 Gif-sur-Yvette